

Site name: 7HS
 Excavation Unit #: LOT 26*
 Stratum: II

Cat. #: 1164
 Test cut #: A,P
 Level: f
 Feature:

Stratum definition: arbitrary natural
 Color (if mottled, in order of dominance): greyish, yellowish + rust brown
 Texture: sand silty sand sandy silt clayey silt fill
 define: with coal
 Opening corner depths (high/low): 2 1/2 / 24
 Closing corner depths: NW (27 1/2") NE (27")
 SW (27") SE 28"
 Portion of cut excavated: whole part (sketch if part)
 Associated stratum if part (Cat. #):
 Stratum encountered at bottom of level/stratum/feature (sketch if more than one): same

Excavation methods:
 Tools: backhoe shovel trowel brush
 Screened: all part (if part, specify sample)
 size of mesh: 1/2" 1/2" Wet Dry

Material recovered (in order of frequency; note and sketch distribution if patterned): slag, brick, ceramics, bone, glass, charcoal, metal, poom

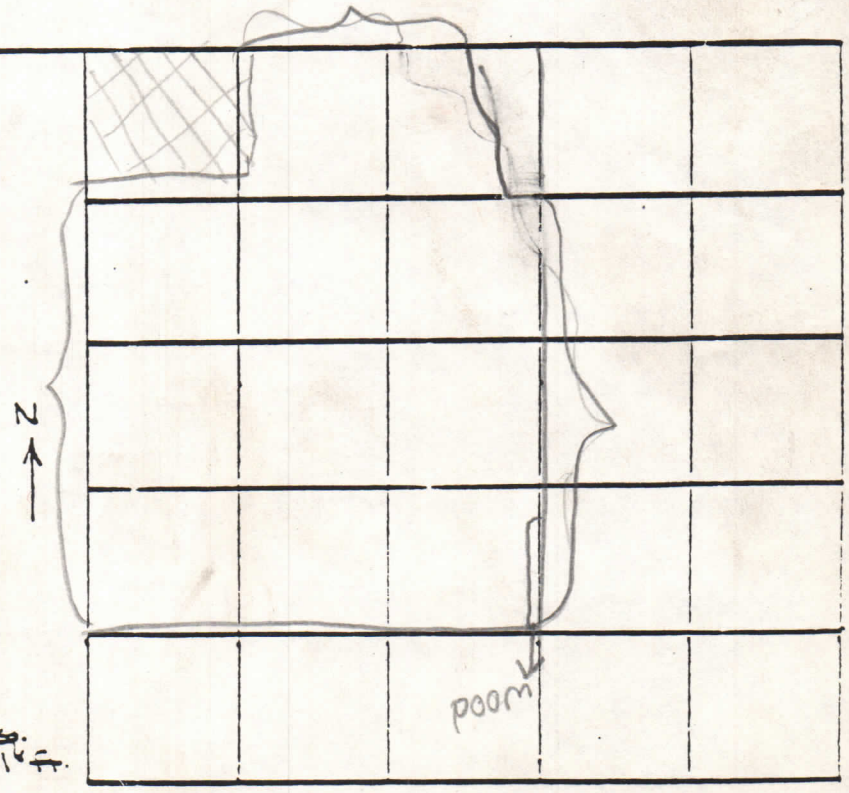
Material discarded in field or sampled (approximate amount):
 8 1/2 kg slag

Samples taken (soil, etc.):

Comments:

Photo (roll, shot #):

Drawn: VDC
 Excavators: VDC / LB / OS
 Date: 7/8/81

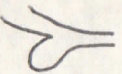



cat. # 1167

AP II F
72822

p. 1 of 2

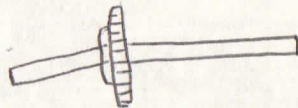
Hanover Square
Diagnostic

	ware type	#	rim	base	body	Form	dec. des. cond.
090	Cremware plain body shards	6		1	5	chamber pot a bowl + ?	.9 large base  rounded Foot ring
091	plain rim shards	3	3			bowl or wash basin	.6, .16 + .11 (mendable) - all same vessel  rim
141	White ware plain rim shards	2	2			plate + hollowware	.3 IRONSTONE etc. .15 possibly CC ware
140	plain body shards	21			21	various vessels cups + large hollowware	.19 cup, .39, .38 frags. - all IRON- STONE etc. .2 large hand strap handle
143	molded / dec. rim shards	5	5			pitcher / ewer large break fast cup	.1 same vessel as in other cats. .12, .22, .7, .27 mended - London shape - im pressed "M" - - -
302	molded / dec body shards	1			1	tee pot ??	.4 multi-sided, rounded
142							
165	Other Refined Earthenware	3			3	burned frags.	
301	Total	41					
320	Bottle Glass other Util itarian - undated	1		neck	1	frag. - clear - modern?	

cat # 1164
P 2 of 2

461 Lead scraps 2 cut pieces

461 Copper Cog 1 crumbling - cog? -



7 Hanover Square
NON Diagnostic

1164
AP
IF

12/4/81
JR

	ct	wt	comments
glass			470
Window glass	30	32.3g	
unident metal	4	83.6g	540g
unident Nail	1	1.3g	481
Red brick frags	16	1099.12g	522g
pan tile	1	126.9g	492
mortar	14	461.7g	533g
coal	2	140.4g	555g
burnt coal	12	788.9g	} 556g
charcoal	24	145.2g	
slag	2	3.5g	558g
wood frags	39	124.6g	546g
slag discarded in field		8½ kg	558g

12/2/81
JR

7 Hanover Square
Fossil Material

1164
AP
II F

	CT	WT	Comments
mammal	4	127.2g	S65
<u>Vegre</u> peach pits (white)	3	2.5g	615

